

Welcome, the webinar will start shortly 🕒



Transforming Health & Social Care Through Connectivity

Tue, 9 Sep 2025 14:00 - 15:30 BST

Housekeeping



Session is being recorded & charts will be issued after the call



All questions in chat (if we don't read out your question we will follow up afterwards)



Please complete feedback and follow-up form (link at end of webinar)



Mics disabled



Cameras disabled



Please avoid raising hand



Adrian Smith
UKTIN Health & Social Care
Adoption Working Group

INTRODUCTION – WORKING TOGETHER

Transforming Health & Social Care Through Connectivity - Backdrop



Fit for the Future: 10 Year Health Plan

A Plan to deliver three big shifts:

- First, from hospital to community.
- Second, from analogue to digital.
- Third, from sickness to prevention.





UKTIN Adoption Webinar



Adrian Smith (Host)
UKTIN Health & Social Care
Adoption Working Group



Tony Sceales
UKTIN Health & Social Care
Adoption Working Group Co-Chair

Transforming Health & Social Care Through Connectivity



Rhys Enfield
WM5G



Simon Hill
Excelerate Group



Barry McNally
Glasgow City Region



Glenda Cook
Glasgow Health
& Social Care

14:00 – 14:05 Introduction - Working together

Adrian Smith, Health & Social Care Working Group, UKTIN



14:05 – 14:25 Connected Ambulance - Saving Lives

Simon Hill, CTO, Excelerate Group



14:25 – 14:45 Smart Social Housing - Tackling Inequalities Head On

Barry McNally, Programme Manager, Glasgow City Region



14:45 – 15:05 Connected Care & Wellbeing - The Alexification of Telecare

Glenda Cook, Planning Mgr, Glasgow Health & Social Care



15:05 – 15:25 WM5G 5GIR Health & Social Care Programme Case Studies

Rhys Enfield, Director of Infrastructure WM5G



15:25 – 15:30 Next Steps - Dating/Collaboration Opportunities

Adrian Smith, Health & Social Care Working Group, UKTIN





Simon Hill
CTO, Excelebrate Group

CONNECTED AMBULANCE – SAVING LIVES

The Problem

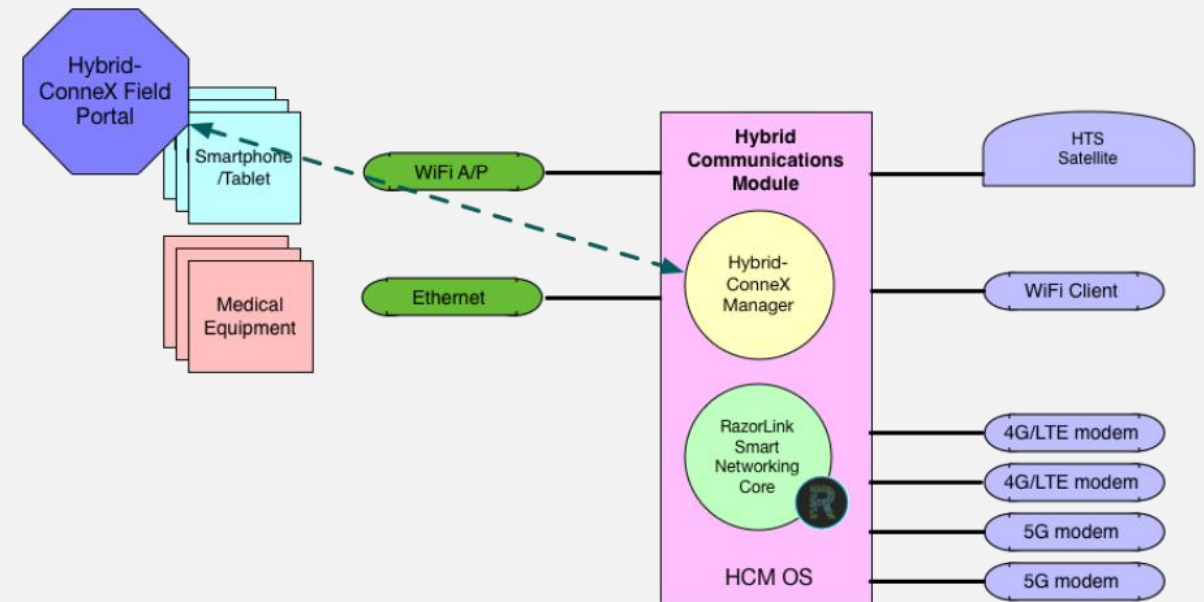
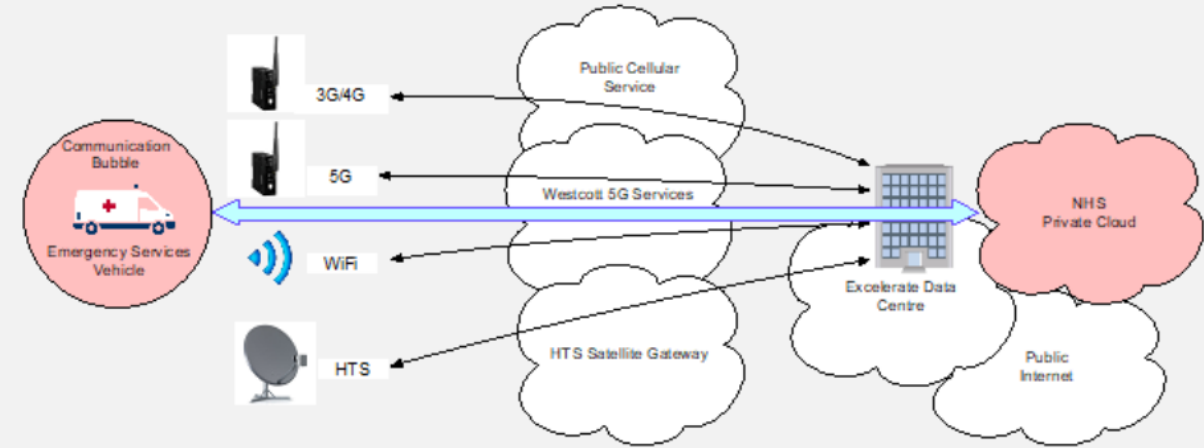
- Ambulance crews need to treat patients more efficiently, ideally in the community without hospital conveyance when safe.
- To support this, the NHS is trialling a new connectivity solution that helps paramedics stay connected in real time, even in remote areas, using a mix of 4G, 5G, and satellite networks.
- Developed by Excelerate Technology and co-funded by the European Space Agency and UK Space Agency, the “**Hybrid Connex Digital Ambulance of the Future**” project enables ‘Always Connected’ crews.
- This allows for remote consultations and telemedicine support on-site, improving care, reducing hospital visits, and saving time and resources.





The Solution

- **Hybrid Connex** is a European Space Agency-funded project led by NHS Arden & GEM, Excelerate Technology, Satellite Applications Catapult with key partners Livewire Digital and Vodafone.
- Delivers a resilient connectivity platform combining satellite (including LEO) and cellular networks.
- At its core is the **Hybrid Edge Appliance**—a smart router with an edge PC and global management software.
- Bonds multiple networks into one secure, high-speed connection using Livewire's software - Ensures stable access to cloud services and local devices, supporting clinical decision-making.
- Unified platform simplifies operations by eliminating multiple SIMs or APNs and allows seamless integration with the Health and Social Care Network (HSCN).
- A central portal gives clinicians real-time connection visibility and enables fleet-wide automation and monitoring.
- Compact, rugged, and low power system.
- 93% connectivity in low/no signal areas, with satellite used in 47% of those cases—often bonded with cellular to boost speed.





The Benefits

- Permanent hybrid connectivity will enable new patient care pathways, expand on-the-spot diagnostics, support telemedicine (e.g., stroke care), and give crews instant access to clinical data and patient records.
- It will improve communication with hospitals and specialists enroute, speed up handovers, help locate patients in low-signal areas, and guide patients to appropriate local care services.
- Financial Benefits:
 - ✓ Lower costs by reducing the need for multiple SIMs and contracts.
 - ✓ Optimized usage by auto-selecting the strongest, most efficient network.
 - ✓ Simplified billing with a single provider for all connectivity.
 - ✓ Greater efficiency through reliable remote access, reducing unnecessary transfers.
 - ✓ Enables telehealth, cutting costs from avoidable hospital visits.





Hybrid Connex - Connected Ambulances

Key Takeaways

(1) The Problem

- Ambulance crews lack consistent connectivity, limiting care delivery and decision-making in remote or low-coverage areas.
- Unnecessary hospital conveyance increase pressure on emergency services and patient pathways.
- Fragmented systems and complex billing hinder digital adoption and operational effectiveness.

(2) The Solution

- Hybrid Connex ensures continuous connectivity via integrated satellite and cellular networks, even in hard-to-reach areas.
- The Hybrid Edge Appliance simplifies network access and supports real-time clinical tools in-vehicle.
- Centralised management portal improves visibility, automation, and data flow across ambulance fleets.

(3) Key Benefits & Business Case

- Enables on-scene diagnosis, remote consultation, and reduced hospital conveyance—improving care and outcomes.
- Cuts connectivity and admin costs by unifying billing, access, and network use.
- Unlocks future telehealth, diagnostic, and operational capabilities for truly mobile, digital ambulance services.

To find out more:

Links

[Connected Ambulances | UKTIN](#)

<https://hybridconnex.co.uk/>

[Connect your world - Excelerate](#)





Barry McNally
Programme Manager
Glasgow City Region



Glenda Cook
Planning Mgr
Glasgow Health & Social Care

SMART & CONNECTED SOCIAL PLACES PROGRAMME

SMART SOCIAL HOUSING –
TACKLING INEQUALITIES HEAD ON

CONNECTED CARE & WELLBEING –
THE ALEXIFICATION OF TELECARE

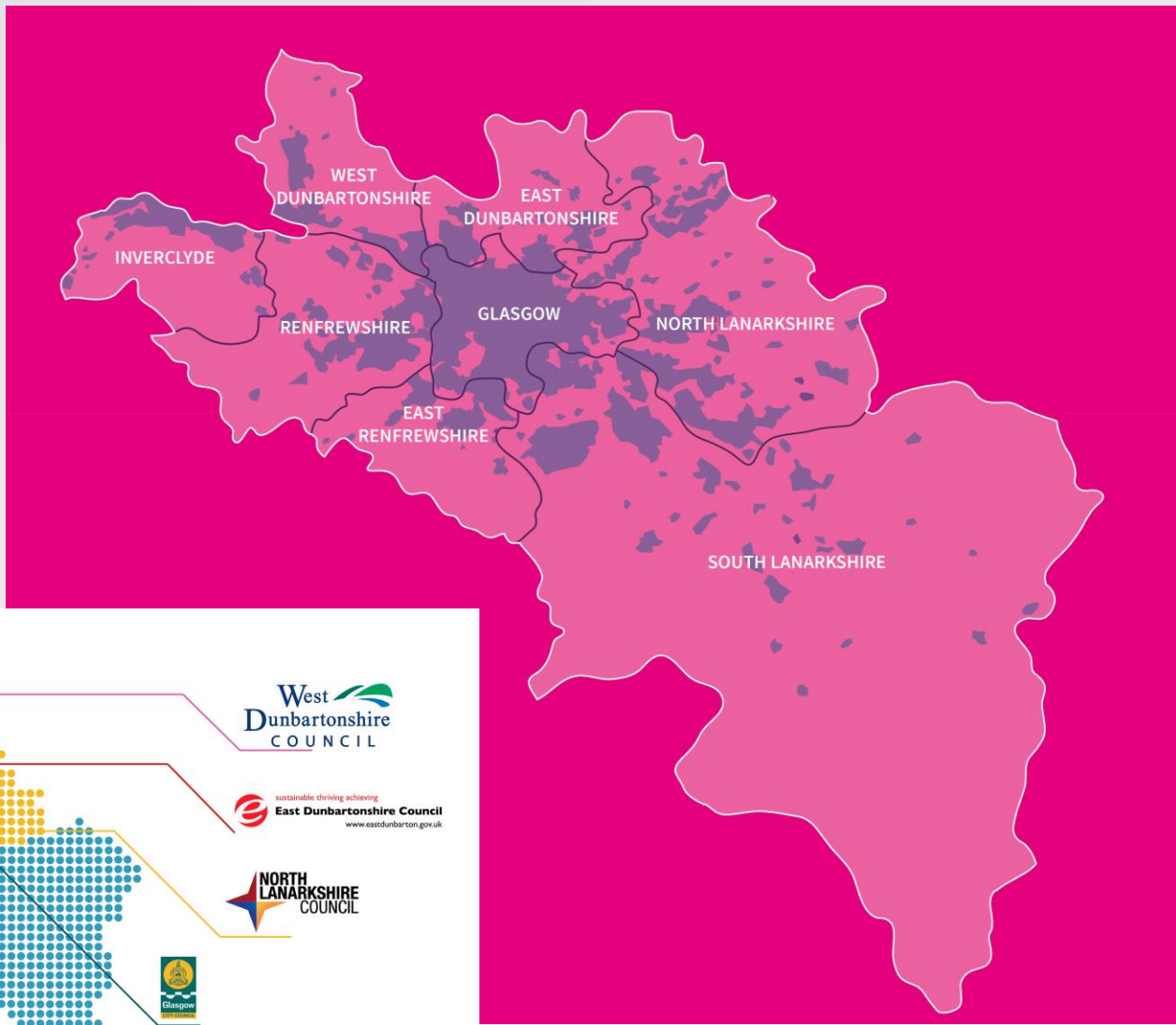
Smart & Connected Social Places Programme

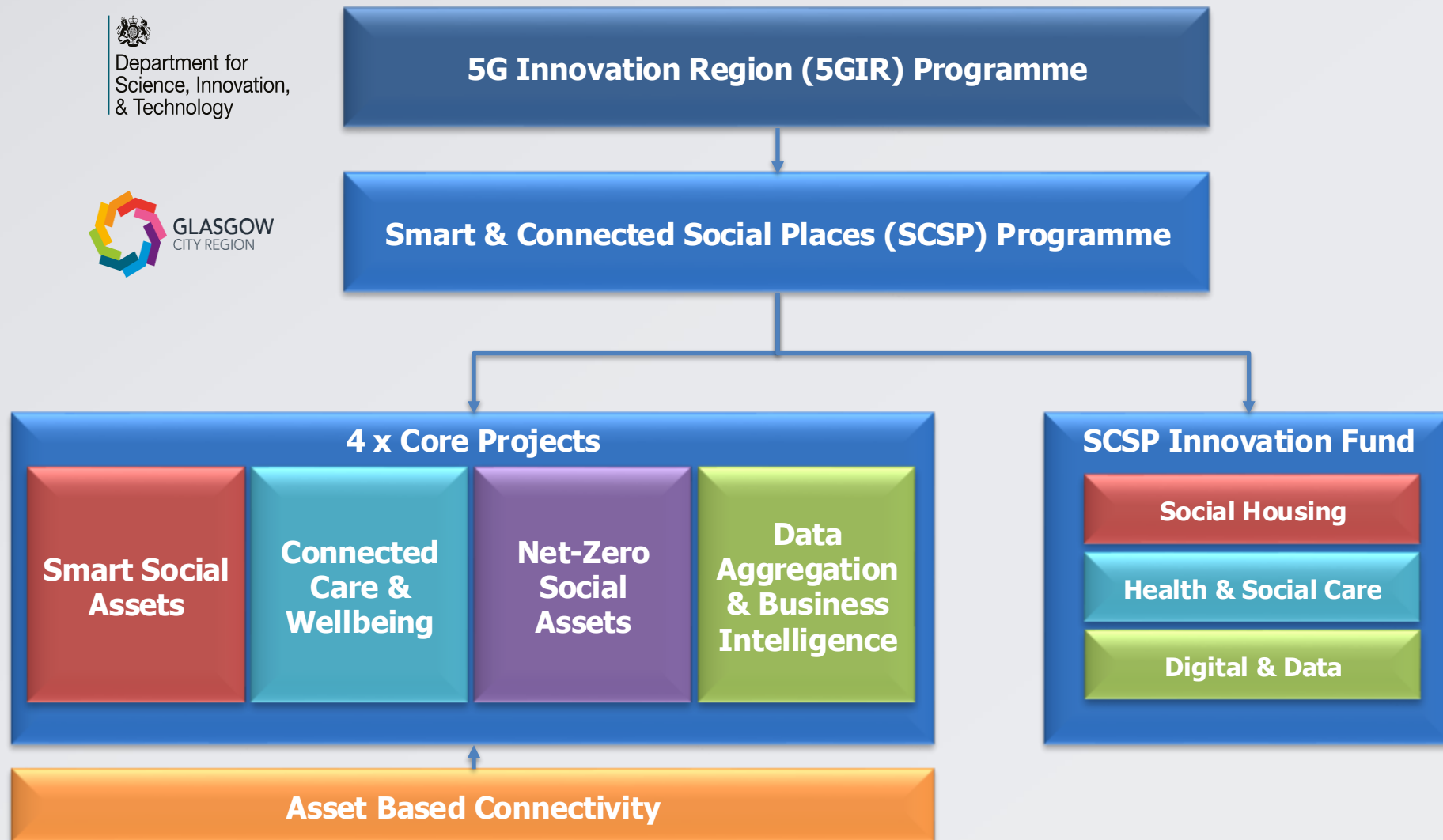
September 2025

Barry McNally
SCSP Programme Manager
Glasgow City Region

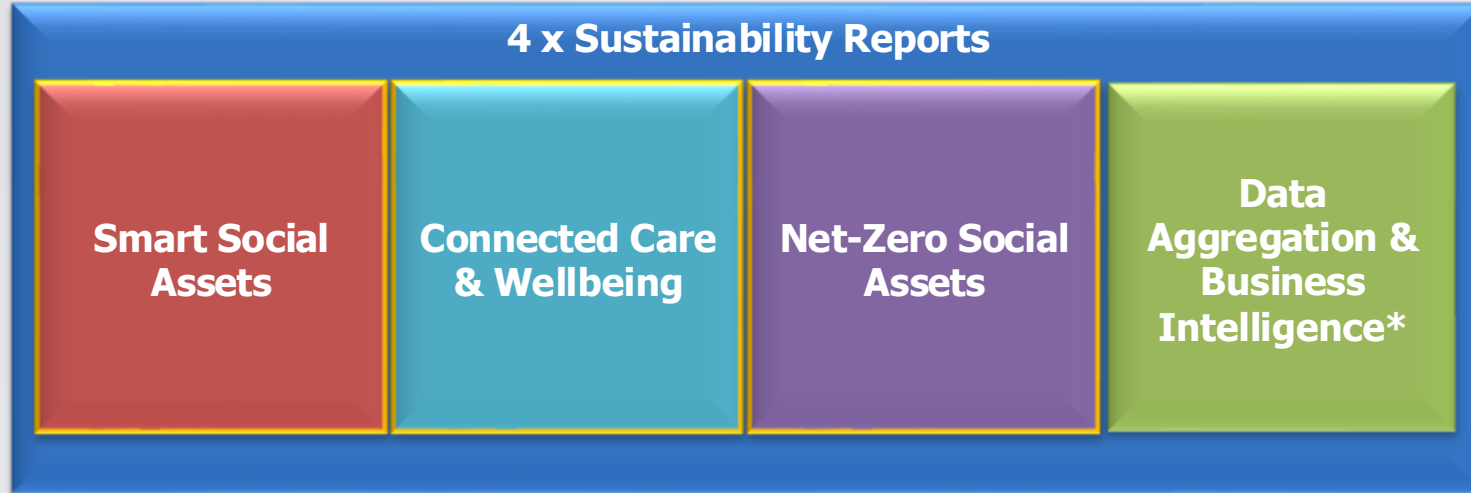
Glenda Cook
Older People Planning Manager
Glasgow City HSCP

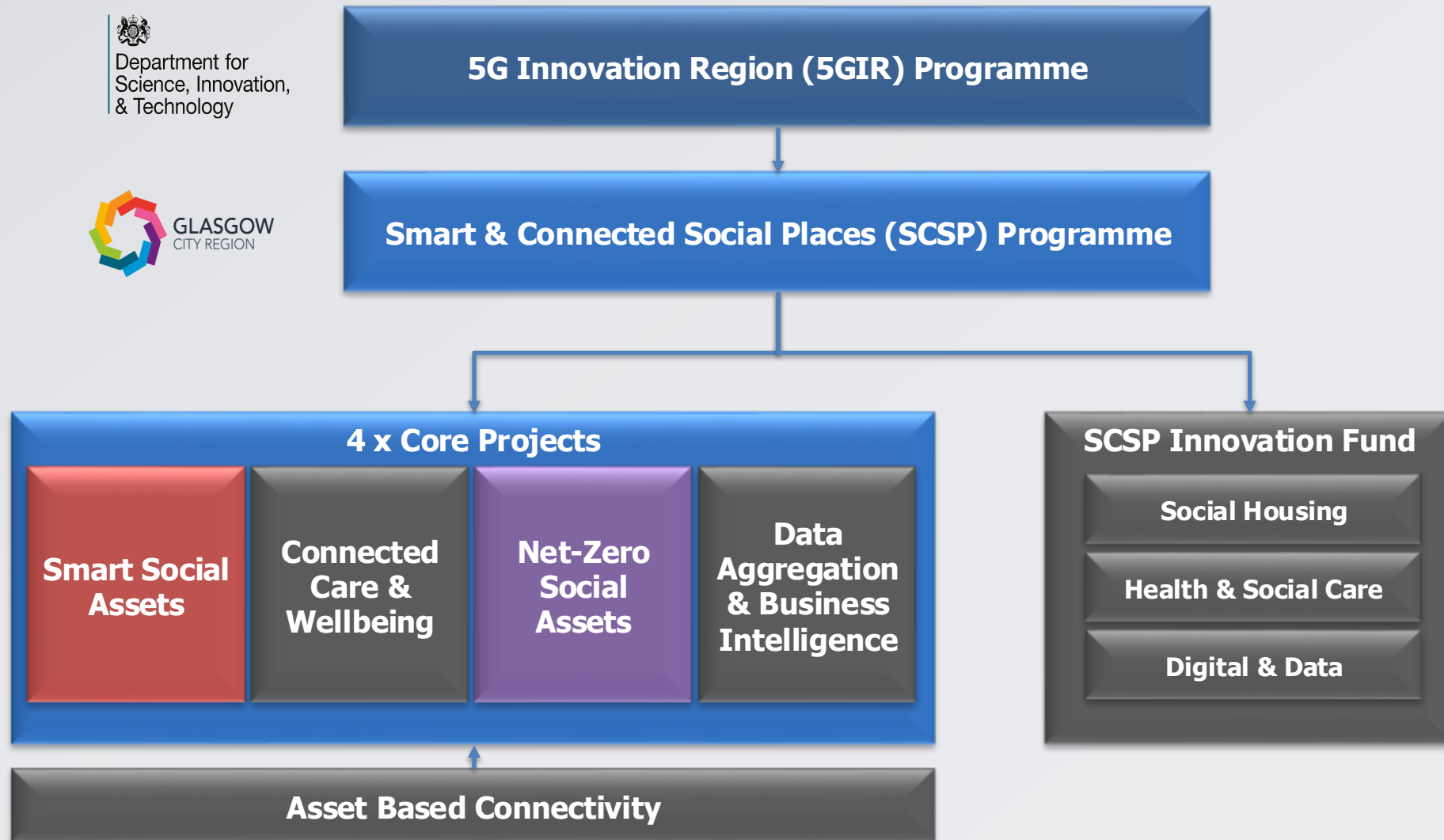






SCSP Programme Outputs





Smart & Connected Social Places Programme

Smart Social Assets

Deploying 5G and AWT enabled digital & data solutions across social assets to improve the health and performance of the asset and the wellbeing of the citizen.

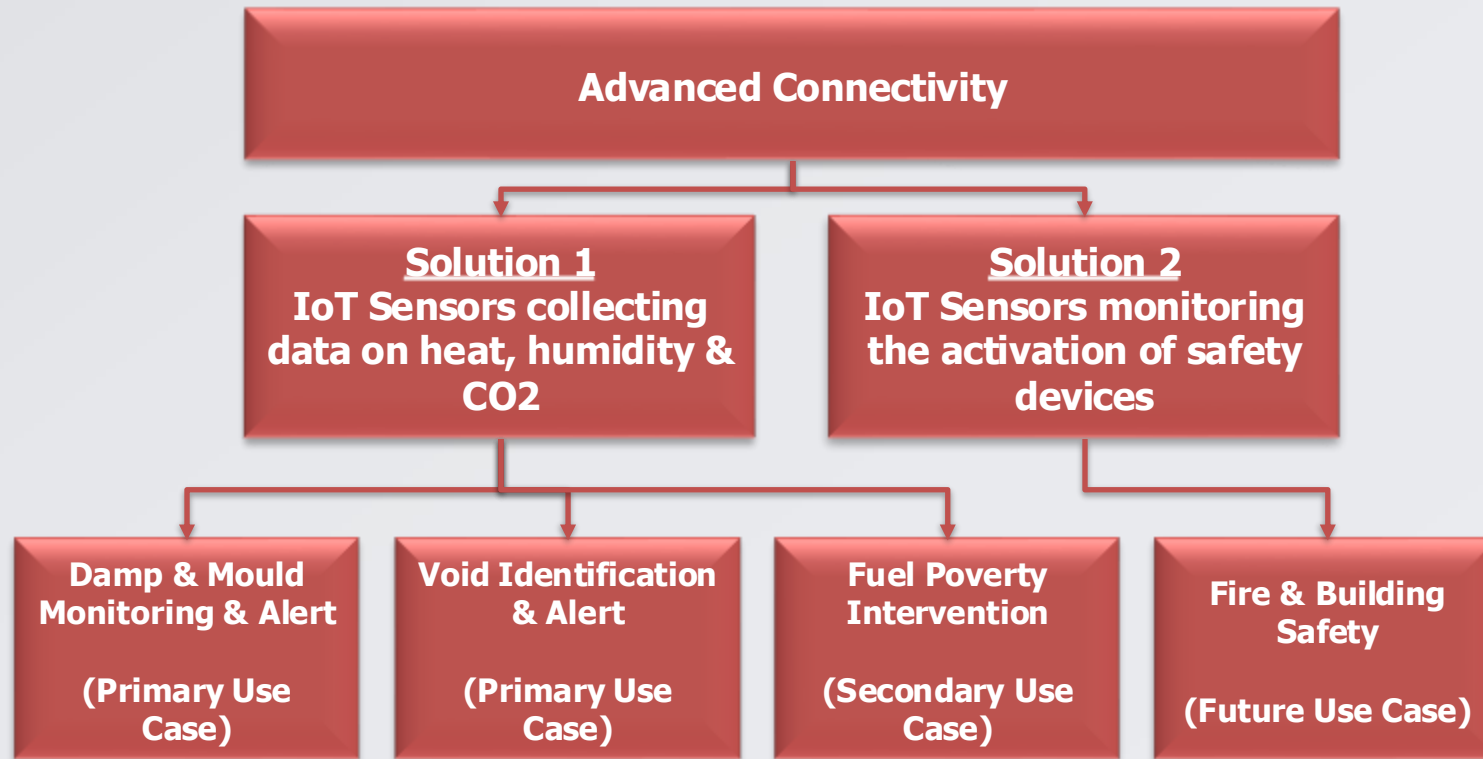


Net-Zero Social Assets

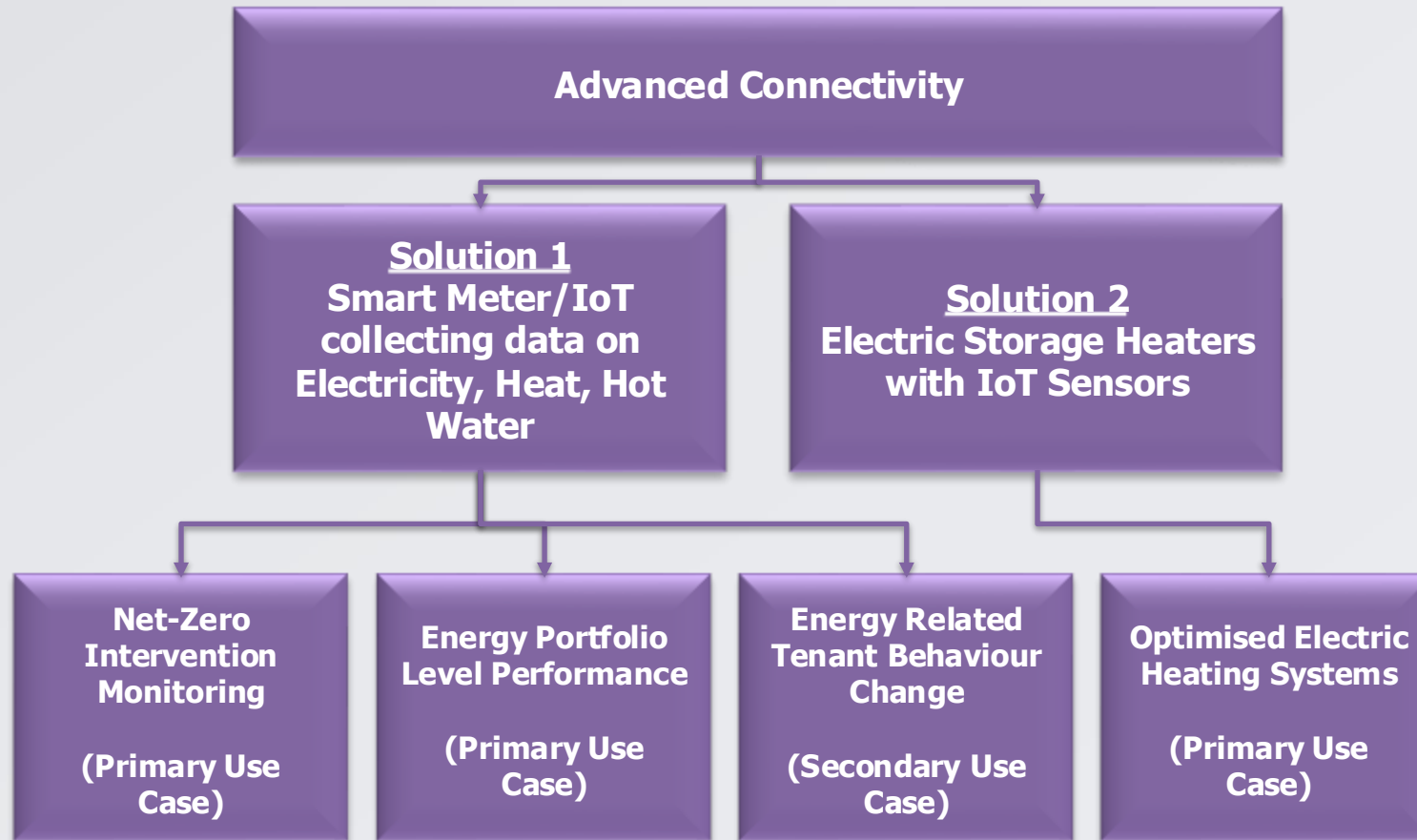
Harnessing the potential of connectivity, digital and data solutions to support net zero and energy efficiency outcomes in social homes and other social assets



Smart Social Assets Use Cases



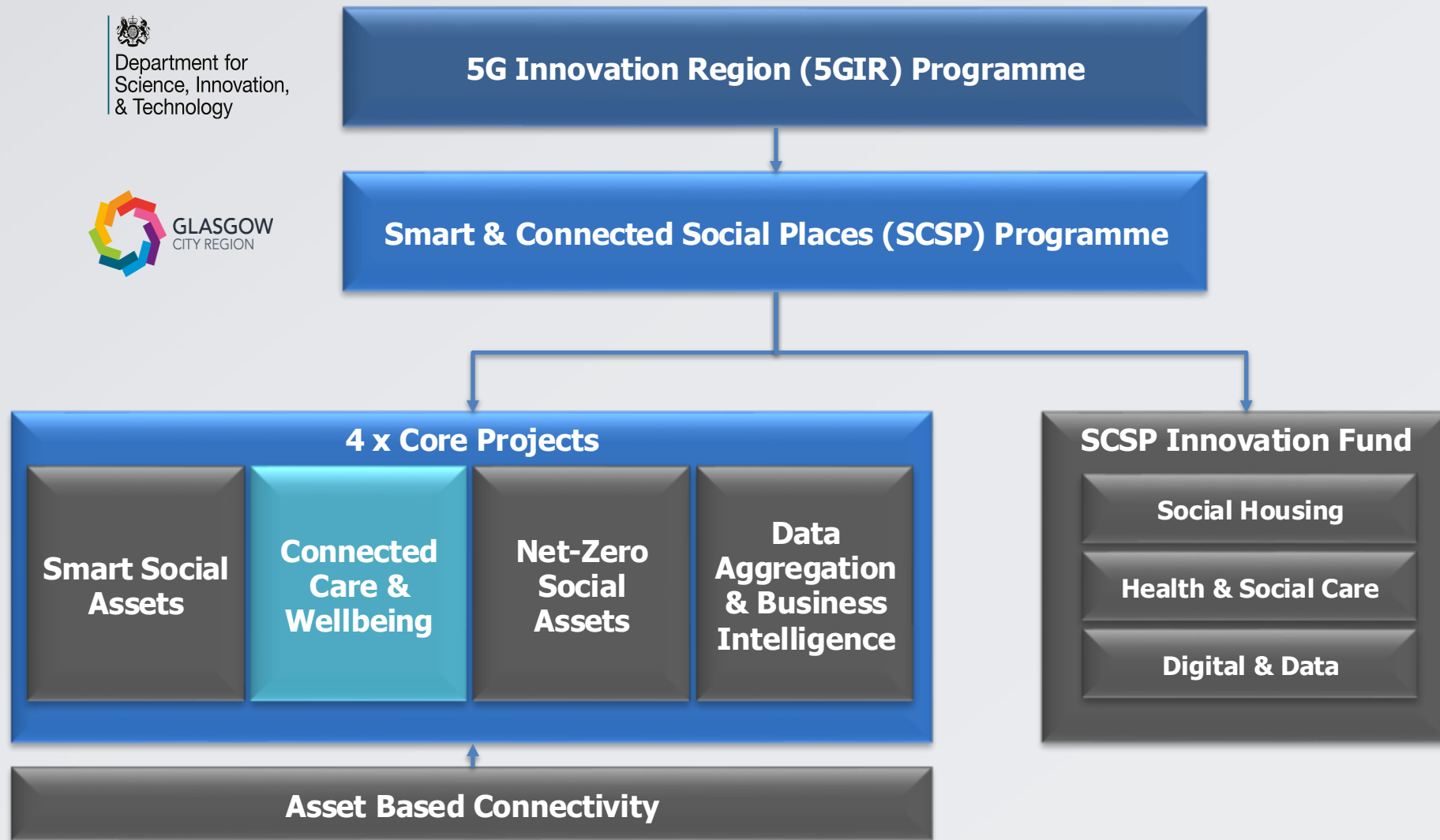
Net-Zero Social Assets Use Cases



Initial Business Case Highlights

Smart Social Assets	
Significant return on investment: <ul style="list-style-type: none">• Costs to LA: Circa £9M (12,500 Properties)• Cashable Benefits to LA: Circa £30M• Cashable Benefits beyond LA: £11M• Significant Qualitative Benefits	Roll-out plan indicates circa 9 years to obtain 95% coverage of estate
Net-Zero Social Assets	
Significant Qualitative Benefits	Limited ability to identify quantifiable Benefits
Significant solution overlap with Smart Social Assets	Roll-out plan indicates circa 9 years to obtain 95% coverage of estate





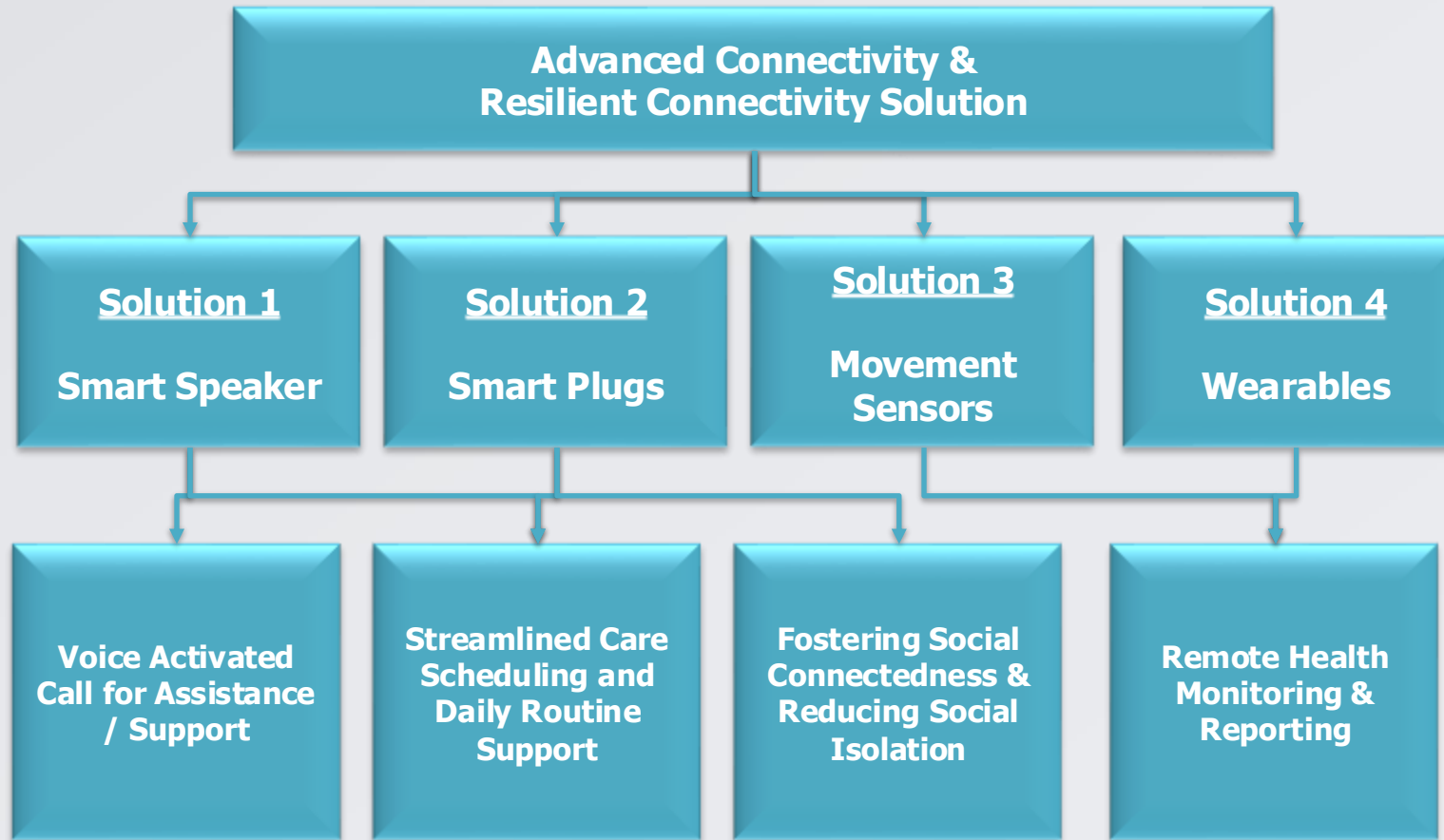
Smart & Connected Social Places Programme



Connected Care & Wellbeing
Leveraging connectivity, digital, and data solutions to keep people safe, well, and socially connected in their own home or in their local communities



Connected Care & Wellbeing Use Cases



Initial Business Case Highlights

Connected Care & Wellbeing	
Significant Qualitative Benefits	Challenges obtaining specific current operating costs and with undertaking comparisons with current Digital Telecare Solutions
Indicated circa £5M of benefits to LA	
Provides a platform for multiple additional and emergent use-cases	





Rhys Enfield
Director of Infrastructure
WM5G

WM5G 5GIR HEALTH & SOCIAL CARE PROGRAMME CASE STUDIES



Adrian Smith
UKTIN Health & Social Care
Adoption Working Group

NEXT STEPS - DATING/COLLABORATION OPPORTUNITIES



Call to Action

Still got questions? please **complete** our online [Next Steps Form](#) (takes 1min) and we will be in touch!



5 lucky people will be offered the chance to explore state-of-the art hybrid connectivity at *excelerate* HQ. This includes climbing aboard some of the world's most sophisticated connected vehicles. To get your name in the draw, just complete our online [Next Steps Form](#) !



Health & Social Care Webinar
Feedback & Next Steps - Would
You Like to Know More?



Still got questions? please **complete**
our online [Next Steps Form](#) (takes
1min) and we will be in touch!

.

HETT
Healthcare Excellence Through Technology

**Meet the UKTIN Health &
Social Care Experts at HETT**
Book a 1:1 Clinic today & help advance your technology
enabled solution.

Innovators & providers welcome | See us at the HETT Start Up Hub

We will be running 1:1 clinics at [HETT
Show 2025](#), please let us know (in the
questionnaire) if you're going - pop
by our stand (S6) in the Startup Zone.

The UK Telecoms Innovation Network



What's
Happening?

Technologies
& Trends

Navigate U
Telecoms

**Advanced Connectivity
in Health and Social Care**

EXPLORE THE POSSIBILITIES



**Wellness, Self-Care and
Prevention**

5G can support streamlining of services, enabling more
timely communication between health and social care,
and enabling individuals to be involved in their care
planning



Diagnosis and Screening

5G's high bandwidth and availability promise quicker
and more advanced diagnosis



Medical Treatment

5G's ability to transfer large amounts of data in
time will enable more efficient and reliable me
treatment and social care

[Register with UKTIN](#) and access our
library of practical [Health and Social
Care: case studies](#) covering multiple
use cases across key sub-domains in
the sector.

THANK-YOU

Health & Social Care Webinar
Feedback & Next Steps - Would
You Like to Know More?

